

## Puure Therapeutics 500mg Full Spectrum Tincture

Sample ID: 2202ELA0082.0388	Manufactured: N/A	Client
Strain: Puure Therapeutics 500mg Full Spectrum Tincture	Collected:	<b>GPS Associates LLC</b>
Matrix: Ingestible	Received: 02/22/2022	Lic. #
Type: Other	Completed: 02/24/2022	1803 Carnegie Ave.
Sample Size: ; Batch:	Batch#:	Santa Ana, CA 92705



### Summary

Test	Date Tested	Result
Batch		Complete
Cannabinoids	02/24/2022	Complete

### Cannabinoids

Complete

<b>0.9652 mg/serving</b>	<b>19.8006 mg/serving</b>	<b>20.7658 mg/serving</b>
Total THC	Total CBD	Total Cannabinoids

Analyte	LOD	LOQ	Result	Result	Result
	mg/g	mg/g	%	mg/g	mg/package
THCa	0.008000	0.198000	ND	ND	ND
Δ9-THC	0.016000	0.198000	0.0993	0.993	28.9559
Δ8-THC	0.011000	0.198000	ND	ND	ND
THCV	0.018000	0.198000	ND	ND	ND
CBDa	0.009000	0.198000	ND	ND	ND
CBD	0.022000	0.198000	2.0371	20.371	594.0184
CBDV	0.015000	0.198000	<LOQ	<LOQ	<LOQ
CBN	0.008000	0.198000	<LOQ	<LOQ	<LOQ
CBGa	0.015000	0.198000	ND	ND	ND
CBC	0.011000	0.198000	ND	ND	ND
<b>Total THC</b>			<b>0.0993</b>	<b>0.9930</b>	<b>28.9559</b>
<b>Total CBD</b>			<b>2.0371</b>	<b>20.3710</b>	<b>594.0184</b>
<b>Total</b>			<b>2.1364</b>	<b>21.3640</b>	<b>622.9742</b>

1 Unit = Tincture, 0.972g. 1 mL = 0.972g. 1 unit(s) per serving. 30 serving(s) per package.

Cannabinoids analysis by SOP LAB-001 utilizing High Performance Liquid Chromatography-Diode Array Detection (HPLC-DAD). Total THC = THCa \* 0.877 + d9-THC; Total CBD = CBDa \* 0.877 + CBD. LOQ = Limit of Quantitation. LOD = Limit of Detection. ND = Not Detected. If moisture content is tested and reported, the cannabinoid results are reported normalized to dry weight.



Jonathan Yang  
Reporting Analyst  
02/24/2022

Confident Cannabis  
All Rights Reserved  
support@confidentcannabis.com  
(866) 506-5866  
www.confidentcannabis.com



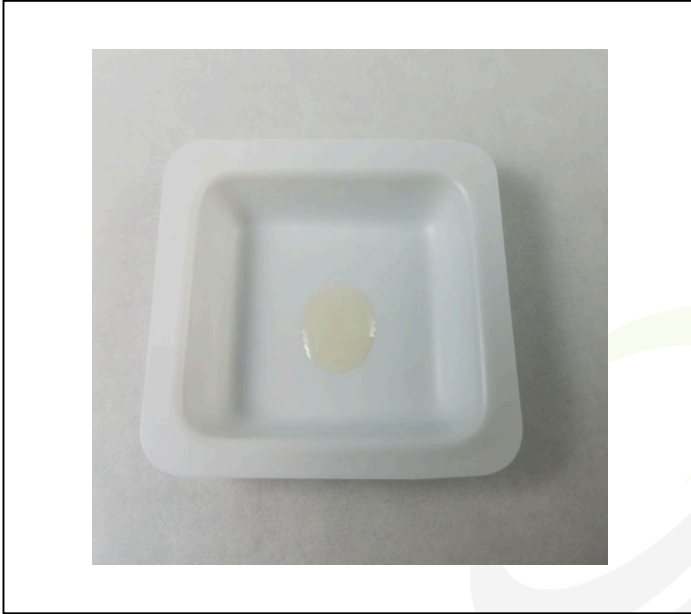
Sample collection for laboratory testing was performed in accordance with BCC's regulations, 16 CCR section 5705, effective 01/2019. Foreign material analysis by SOP LAB-008 utilizing visual examination and optical microscopy. Water activity measurement by SOP LAB-010 utilizing chilled-mirror dew point analysis. Moisture content measurement by SOP LAB-009 utilizing thermogravimetric analysis. This product has been tested by Earth Labs, LLC using valid testing methodologies and quality system as required by state law. All LQC samples were performed and met the acceptance criteria, pursuant to 16 CCR section 5730. Values reported relate only to the product tested. Earth Labs, LLC makes no claims as to the efficacy, safety or other risks associated with any detected or non-detected levels of any compounds reported herein. This Certificate shall not be reproduced except in full, without the written approval of Earth Labs, LLC.

## Puure Therapeutics 500mg Full Spectrum Tincture

Sample ID: 2202ELA0082.0388  
Strain: Puure Therapeutics 500mg Full Spectrum Tincture  
Matrix: Ingestible  
Type: Other  
Sample Size: ; Batch:

Manufactured: N/A  
Collected:  
Received: 02/22/2022  
Completed: 02/24/2022  
Batch#:

Client  
**GPS Associates LLC**  
Lic. #  
1803 Carnegie Ave.  
Santa Ana, CA 92705



Jonathan Yang  
Reporting Analyst  
02/24/2022

Confident Cannabis  
All Rights Reserved  
[support@confidentcannabis.com](mailto:support@confidentcannabis.com)  
(866) 506-5866  
[www.confidentcannabis.com](http://www.confidentcannabis.com)

